

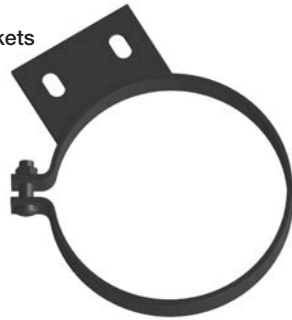
BRACKETS

Stack and Muffler Mounting Brackets

Peterbilt

Bolts directly onto factory cab brackets

DIA.	POLISHED STAINLESS PART NO.
5"	MB-5PBS
6"	MB-6PBS
7"	MB-7PBS



Fits 359 & 379 models

PB-14656U

(2PC Grommet)

Use 2 of these 2pc Grommets along with any of the Peterbilt mounting brackets listed and with PB-12998S or PB-14186S

Polyurethane NOT Rubber



Bolts directly onto factory cab brackets

DIA.	POLISHED STAINLESS PART NO.
5"	OS-5PBS
6"	OS-6PBS
7"	OS-7PBS

May be used on unibilts or where you want to move the stack 2"



PB-12998S

(Polished Stainless Steel)

Fits 379

Replaces 14-14792 "Horseshoe" style cab Bracket



PB-14186S

(Polished Stainless Steel)

Fits 379



Stack and Muffler Mounting Brackets, continued

Kenworth

W900 B

Bolts directly onto factory cab brackets

DIA.	POLISHED STAINLESS PART NO.
5"	MB-5KWS
6"	MB-6KWS
7"	MB-7KWS



AEROCAB

DIA.	POLISHED STAINLESS PART NO.
6"	AC-6KWLP (Left)
6"	AC-6KWRP (Right)
7"	AC-7KWLP (Left)
7"	AC-7KWRP (Right)



Use factory 8mm bolt for mounting

AEROCAB

DIA.	POLISHED STAINLESS PART NO.
5"	ACFM-5
6"	ACFM-6
7"	ACFM-7



Western Star

WESTERN STAR 5", 6", & 7" STACK MOUNT BRACKETS HERITAGE MODEL

PART NO.
MB-WS



Bolt to existing cab brackets & bolt MB-5PBS, MB-6PBS or MB-7PBS to it for a simple hassle free installation.

WESTERN STAR CONSTELLATION

DIA.	STAINLESS PART NO.
6"	MB-6WSS
7"	MB-7WSS



BRACKETS

Stack and Muffler Mounting Brackets, continued

Universal

FREIGHTLINER / IH / UNIVERSAL

DIA.	POLISHED STAINLESS PART NO.
5"	ACFM-5
6"	ACFM-6
7"	ACFM-7

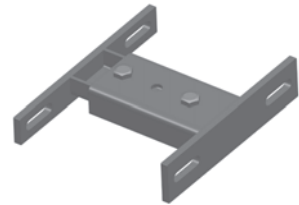


These can be used to replace standard 5" bolt type clamps.

STACK MOUNT BRACKET

See Page 35 for 4", 5" or 6" FB style clamps needed with these brackets.

PLAIN PART NO.	CHROME PART NO.
SMB	SMB-C



MUFFLER CLAMP



FITS MUFFLER DIMENSIONS	PART NO.
9"	MMB-9
10"	MMB-10
11"	MMB-11

Brackets

4" FORD DIESEL TAIL PIPE HANGER



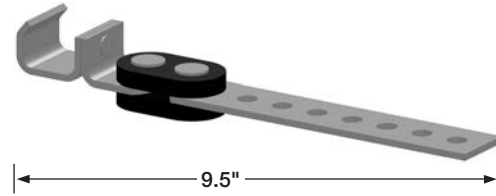
H-FTP1



H-FLM1
Muffler Hanger
Fits 11-1/8" Body Dia.
OE# 04-17998-001

HANGER

For horizontal applications for use on exhaust pipes or mufflers. Use 2 per muffler. Clamps not included. See page 35 for proper RB style clamps.



PLAIN PART NO.

H-10
H-10C
H-17

MUFFLERS HANGERS

PART NO.	STYLE	FITS BODY DIA.
RMH-7834	B	7" - 8-3/4"
RMH-6	A	6"
RMH-7	A	7"
RMH-8	A	8"
RMH-85	A	8-1/2"
RMH-9	A	9"
RMH-10	A	10"
OMH-8511	A	8-1/4" x 11-1/2"
OMH-1015	A	10" x 15"
RMH-11	C	11"
RMH-12	A	12"



STYLE A



STYLE B



STYLE C

MUFFLERS HANGERS

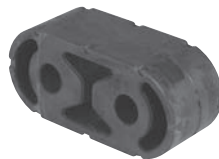
PART NO.	FITS BODY DIA.
QPM-8H	8"



FREIGHTLINER HANGERS



H-FLM2
Muffler Hanger
2004 & Newer
OE# A04-20919-000



RS-FRL1
Rubber Mount
2004 & Newer
OE# 04-19919

H-IHP1
Rubber Mount
2005 & Newer
International



H-FLP1
Hanger, Similar to
OE # A04-22840-000



H-FLP3
Hanger, Similar to
OE # 04-22424-000 &
04-22842-000



H-FLP4
Hanger, Similar to
OE # A04-21485-000



H-FLP4
Hanger, Similar to
OE # A04-18007-001

BRACKETS

Brackets, continued

CHEVROLET/GMC OVERAXLE HANGER ASSEMBLY



H-BBP2
Frame Bracket



H-BBP1
U-Shaped Hanger

FORD MUFFLER HANGERS

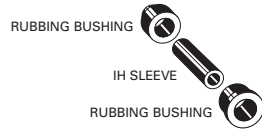


H-FTM2
Fits all Diesel Mufflers 1983 - UP
14" Round

INTERNATIONAL BRACKETS (extra heavy duty reinforced)



H-IHP6
Overaxle Bracket
(not included in complete set)



H-IH7
Complete Set
(tailpipe bracket, bushing, sleeve)



H-IHP3



H-IHP5 (4")
Pipe Hangers



H-IHM6 (7.3L)
Muffler Hangers
(1986 - UP)



H-IHM1 (96 - UP)
T44E Eng. (Forward)
Rear Muffler Hanger



H-IHM2 (96 - UP)
T44E Eng. (Forward)
Front Muffler Hanger
(big hole)



H-IHM4



H-IHM6A



H-IHP7
AMTRAN T444E/DT466
Rear Engine



H-USE1



H-USE2

LENGTH	IHC P/N	STRAP LOCATION
4-1/2	1660539C91	top row of holes
5	1660549C91	bottom row of holes

PART NO.	INTERNATIONAL NO.
H-USE1	482173C1
H-USE2	1675835C1