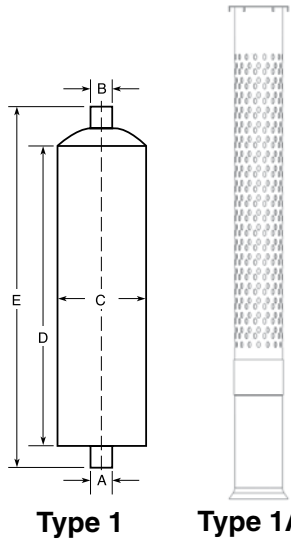


MUFFLERS & CONVERTERS



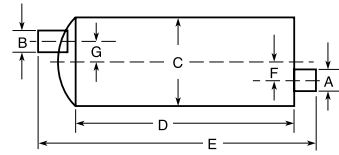
MUFFLERS

MUFFLER TYPES

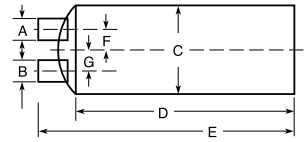


Type 1

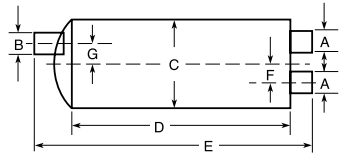
Type 1A



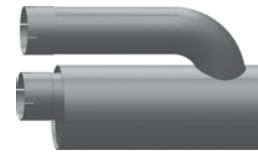
Type 2



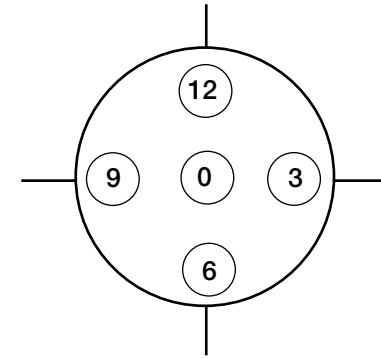
Type 3



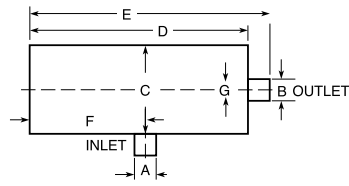
Type 2A



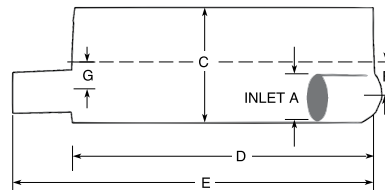
Type 3A



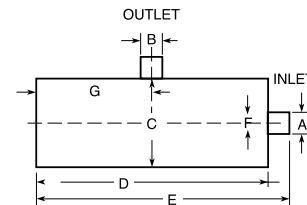
NOTE: All clock positions viewed from inlet end of muffler.



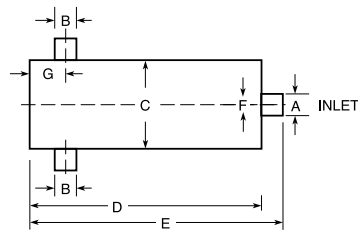
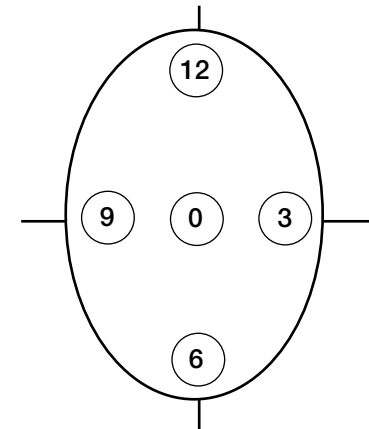
Type 4



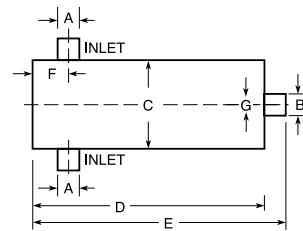
Type 5



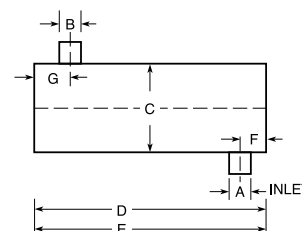
Type 6



Type 7



Type 8



Type 9

Note: Mufflers available in Stainless Steel, Call for details

MUFFLERS

MUFFLER SPECS

TYPE 1 – RESONATORS

Type	Part No.	A Inlet Dia. I.D.	B Outlet Dia I.D.	C Body Dia.	D Body Length	E Overall Length	F Inlet Offset/ Clock Position	G Outlet Offset/ Clock Position	Fits
1	M-556	3"	3"	9"	11.5"	16"	-	-	-
1	M-150	3.5"	3.5"	9"	14"	19.75"	-	-	-
1	M-144	4"	4"	9"	10"	16.5"	-	-	-
1	M-062	5"	5"	11"	55"	61.5"	-	-	Peterbilt 07 Newer
1	M-145	5"	5"	9"	10"	16.5"	-	-	-

TYPE 1A – Internal Mufflers

Type	Part No.	A Inlet Dia. I.D.	B Outlet Dia I.D.	C Body Dia.	D Body Length	E Overall Length	F Inlet Offset/ Clock Position	G Outlet Offset/ Clock Position	Fits
1A	IM-418	4"	4"	4"		18"	-	-	Inside a Stack or Pipe
1A	IM-518	5"	5"	5"		18"	-	-	Inside a Stack or Pipe
1A	IM-560	5"	5"	5"		60"	-	-	Inside a Stack or Pipe
1A	IM-572	5"	5"	5"		72"	-	-	Inside a Stack or Pipe
1A	IM-672	6"	6"	6"		72"	-	-	Inside a Stack or Pipe
1A	IM-772	7"	7"	7"		72"	-	-	Inside a Stack or Pipe

TYPE 1 – END IN / END OUT CENTERED

Type	Part No.	A Inlet Dia. I.D.	B Outlet Dia I.D.	C Body Dia.	D Body Length	E Overall Length	F Inlet Offset/ Clock Position	G Outlet Offset/ Clock Position	Fits
1	M-187	3"	3"	6.1"	21"	30"	-	-	-
1	M-878	3"	4"	11"	36"	41.75"	-	-	Freightliner SB
1	M-110	3.5"	4"	8.5"	29.5"	36"	-	-	Thomas SB
1	M-188	3.5"	3.5"	7.1"	30"	38"	-	-	-
1	D5M	4"	5"	8"	15"	21"	-	-	Powerflow
1	M-079	4"	4"	10"	36"	43"	-	-	Bluebird SB
1	M-087	4"	4"	11"	36"	43"	-	-	Freightliner SB
1	M-127	4"	4"	8.5"	34.5"	41"	-	-	Mack R Model
1	M-131	4"	4"	9"	44.5"	51"	-	-	-
1	M-444	4"	4"	10"	44.5"	51"	-	-	-

MUFFLERS

MUFFLER SPECS, CONTINUED

TYPE 1 – END IN / END OUT CENTERED, continued

1	M-630	4"	4"	6"	24"	30"	-	-	-
1	M-824	4"	4"	8"	15"	21.5"	-	-	Powerflow
Type	Part No.	A Inlet Dia. I.D.	B Outlet Dia I.D.	C Body Dia.	D Body Length	E Overall Length	F Inlet Offset/ Clock Position	G Outlet Offset/ Clock Position	Fits
1	HF-1051	5"	5"	10"	44.5"	51"	-	-	Fuel Saver
1	M-062	5"	5"	11"	55"	61.5"	-	-	Peterbilt 387 06 & Older Muffler
1	M-0824	5"	5"	11"	55"	61.5"	-	-	Peterbilt 387 07& Newer Resonator
1	M-102	5"	5"	9"	44.5"	51"	-	-	Better Quality
1	M-130	5"	5"	10"	44.5"	51"	-	-	Better Quality
1	M-132	5"	5"	9"	44.5"	51"	-	-	Economy
1	M-136	5"	5"	10"	36"	41.6"	-	-	Great for Dump Trucks
1	M-1774	5"	5"	8"	55"	61"	-	-	Freightliner
1	M-196	5"	5"	10"	44.5"	51"	-	-	Cummins Electronic
1	M-465	5"	5"	10.1"	44.5"	51"	-	-	Economy
1	M-533	5"OD	5"	9"	25"	33"	-	-	Pete 379 Standard Hood
1	M-533-0	5"OD	5"	9"	25"	33"	-	-	Less Restrictive for High HP Engines
1	M-557	5"OD	5"	9"	34"	40.5"	-	-	Pete 379 Extended Hood
1	M-557-0	5"OD	5"	9"	34"	40.5"	-	-	Less Restrictive for High HP Engines
1	M-595	5"	5"	9"	20"	26.5"	-	-	-
1	M-656	5"	6"	10"	44.5"	51"	-	-	-
1	M-1236	5"	5"	12"	36"	41"	-	-	-
1	M-1436	5"	5"	14"	36"	41"	-	-	-
1	M-651	6"	6"	10"	44.5"	51"	-	-	-

MUFFLERS

MUFFLER SPECS, CONTINUED

TYPE 2 – END IN / END OUT OFFSET ENDS

Type	Part No.	A Inlet Dia. I.D.	B Outlet Dia I.D.	C Body Dia.	D Body Length	E Overall Length	F Inlet Offset/ Clock Position	G Outlet Offset/ Clock Position	Fits
2	M-518	2.5"	2.5"	6"	26"	33"	1.5"/12	3.6"/6	
2	M-624	2.75"	3"	8.5"	30.25"	36.25"	3"/12	2.75"/6	Chevrolet/GMC SB
2	M-070	3"	4"	11"	36.25"	42"	3"/6	4"/12	Freightliner SB
2	M-1136	3"	4"	11"	36"	42"	2.5"/12	2.5"/6	-
2	M-139	3"	3"	8.5"	31.2"	36.2"	2"/12	2"/6	-
2	M-106	3.5"	3.5"	8.25" x 11.5"	26"	32"	3"/12	3"/6	-
2	M-512	3.5"	4"	8.25" x 11.5"	27"	33"	2.5"/12	2.5"/6	IH
2	M-536	3.5"	4"	8.25" x 11.5"	32"	36.5"	2.5"/12	2.5"/6	International SB
2	M-879	3.5"	4"	11"	36"	42"	3"/0	0/12	Freightliner SB
2	M-125	4"	4"	10" X 15"	34"	40.5"	4.25"/6	4.25"/12	Thomas SB
2	M-153	4"	4"	8.25" x 11.5"	27"	33"	2.5"/12	2.5"/6	-
2	M-502	4"	4"	11"	36"	41.2"	2.5"/12	2.5"/6	Freightliner/Ford SB
2	M-529	4"	4"	11"	36"	42.2"	2.5"/12	2.5"/6	Ford SB
2	M-117	5"	5"	10" x 15"	36"	42"	4"/12	4"/6	-
2	M-147	5"	5"	10" X 15"	27"	33"	3.3"/12	3.3"/6	Thomas SB
2	M-4025	5"	5"	11"	36"	41"	2.5"/12	2.5"/6	Ford
2	M-180	6"	6"	10" x 15"	32"	42.5"	3.6"/12	3.6"/6	-

TYPE 2A – DUAL END IN / SINGLE END OUT

Type	Part No.	A Inlet Dia. I.D.	B Outlet Dia I.D.	C Body Dia.	D Body Length	E Overall Length	F Inlet Offset/ Clock Position	G Outlet Offset/ Clock Position	Fits
2A	M-722	2.5"-2.5" FLARE	3"OD	8.7"	30"	39"	1.75"/1:30/10:30	2"/6	Bluebird/GMC SB
2A	M-185	2.75"-2.75"	4"	8.25" x 11.5"	27"	32.75"	4"/12-4"/6	2.5"/6	International SB
2A	M-622	2/2.5"	FLANGE	8.5"	29.5"	37.5"	2.5"/12	2.5"/3-3	Bluebird/GMC SB

MUFFLERS

MUFFLER SPECS, CONTINUED

TYPE 3 & 3A - IN AND OUT SAME END

Type	Part No.	A Inlet Dia. I.D.	B Outlet Dia I.D.	C Body Dia.	D Body Length	E Overall Length	F Inlet Offset/ Clock Position	G Outlet Offset/ Clock Position	H Ctr. To Ctr.
3	M-152	3"	4"	10" X 15"	30" 3	34"	-	4"/6	-
3	M-755	3.5"	4" OD	8.25" x 11.5"	32"	38.4"	2.5"/12	2.5"/6	-
3	M-033	4"	5"	11"	30"	33.5"	3"/12	3"/12	5"
3	M-115	4"	4"	10" X 15"	26" 2	29.2"	4"/12	4"/6	-
3	M-124	4"	5"	12" X 15"	30" 3	34"	4"/12	4"/6	-
3	M-116	5"	5"	10" X 15"	36"	40"	4"/12	4"/6	-
3	M-121	5"	5"	10" x 15"	26"	29"	3"/12	3"/6	6"
3	M-121L	5"	5"	10" x 15"	44"	48"	3"/12	3"/6	6"
3	M-121L6	5"	6"	10" x 15"	44"	48"	3"/12	3"/6	6"
3	M-899	5"	5"	12"	35"	39"	-	-	-
3A	M-922	5"	5"	9"	22"	25"	-	-	7.5"
3A	M-922-6	6"	6"	9"	22"	25"	-	-	7.5"

TYPE 4 - SIDE IN / END OUT

Type	Part No.	A Inlet Dia. I.D.	B Outlet Dia I.D.	C Body Dia.	D Body Length	E Overall Length	F Inlet Offset/ Clock Position	G Outlet Offset/ Clock Position	Fits
4	M-034	4"	4"	11"	36"	40"	4.5"/3	2.5"/12	Bluebird/GMC SB
4	M-149	4"	3.8"OD	10" x 15"	16"	20.1"	3.1"/12	4.4"/12	Mack DM
4	M-542	4"	5"	10" X 15"	21"	25"	3.1"/12	4.4"/12	-
4	M-625	4"	4"	11"	42"	45"	4"/12	0/0	Bluebird SB
4	M-626	4"	4"	11"	33.5"	36.5"	4"/12	0/0	Thomas SB
4	M-724	4"	4"	11"	36"	39"	4.3"/9	2.5"/12	-
4	M-751	4"	5"	10" x 15"	27"	30"	22.4"/5:30	3.6"/12	DOT / IH
4	M-771	4"	5"	9"	44.5"	48"	3.8"/6	0"/0	-
4	M-526	5"	5"	10"	44.5"	48.25"	5.5"/6	-	GMC Brigadier & Astro
4	M-757	5"	5"	12.3" X 15.2"	27"	30"	22.4"/5;30	3.6"/11	DOT / IH

MUFFLERS

MUFFLER SPECS, CONTINUED

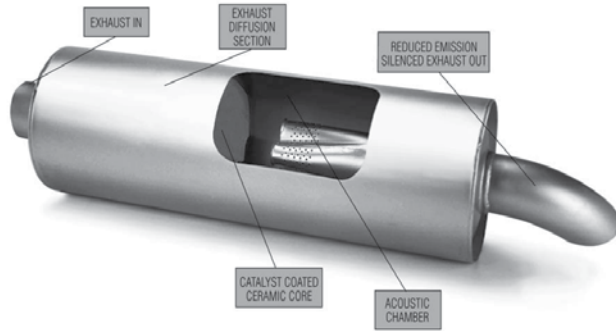
TYPE 6 - END IN /SIDE OUT

Type	Part No.	A Inlet Dia. I.D.	B Outlet Dia I.D.	C Body Dia.	D Body Length	E Overall Length	F Inlet Offset/ Clock Position	G Outlet Offset/ Clock Position	Fits
6	M-537	3.5"	4"	8.25" x 11.5"	32"	35"	2.5"/6	20"/3:30	IH DT 466 Horizontal Outlet
6	M-545	3.5"	4" OD	8.25" x 11.5"	32"	34.9"	2.5"/12	20.2"/3:30	DOT / IH
6	M-548	3.5"	4"	8.25" x 11.5"	32"	34.9"	2.5"/12	24.7"/3:30	DOT / IH
6	M-527C1	3.5"	4" OD	8.25" x 11.5"	32"	35.5"	2.5"/6	3.5"/9:00	DOT / IH
6	M-777	3.5"	4" OD	8.25" x 11.5"	32"	34.9"	2.5"/12	24.7"/3:30	DOT / IH
6	M-530	4"	4"	11.1"	36"	39"	1.5"/6	28.5"12	Ford
6	M-503	5"	5"	10" x 15"	36"	39"	4.0"/12	28.5"/6	Ford
6	M-672	5"	5"	11"	36"	39"	2.7"/6	28.5"/12	Ford
6	M-010	5" OD	5" OD	12"	36"	39"	-	15"/12	-
6	M-158A	5"	5"	13"	42"	45"	-	14"/12	04-22804-000

TYPE 7 - END IN / DUAL SIDE OUT

Type	Part No.	A Inlet Dia. I.D.	B Outlet Dia I.D.	C Body Dia.	D Body Length	E Overall Length	F Inlet Offset/ Clock Position	G Outlet Offset/ Clock Position	Fits
7	M-7185	5"	5"/5"	8" X 20"	29"	32"	CTR	23"/9&3	Freightliner Columbia

CONVERTERS/DOC CATALYTIC CONVERTERS MUFFLERS



Certified to Meet EPA Requirements
Grand Rock converter mufflers are engineered to enable mid-range engines to meet emission requirements of the EPA's Diesel Emissions Standards. The catalytic core within the muffler reduces gaseous hydrocarbons, carbon monoxide, and particulates, while at the same time reducing exhaust noise to 67-72 dBA at 50 feet per the EPA drive-by noise test (levels will vary depending on system configuration).

- Same package size as equivalent mufflers
- Only 10 to 15 lbs. heavier than equivalent mufflers
- 409 Stainless Steel
- Internal design for even exhaust flow distribution

PART NO.	STYLE	INLET ID	OUTLET ID	INLET POSITION	OUTLET POSITION	INLET OFFSET	OUTLET OFFSET	CROSS SECTION	SHELL LENGTH	OVERALL LENGTH
M-355CT	1	4"	4"	0	0	0	0	11"	36"	41"
Style/Type Description - CENTER TO CENTER Application/Description - All engines up to 9L, DT, DTA, VT, T International's 5.9L to 9L Cummins, all CAT engines up to 9L										
M-580CT	2	3.5"	4"	6	12	2.75"	2.75"	8.25" x 11.5"	29.5"	36.5"
Style/Type Description - OFFSET TO OFFSET Application/Description - All engines up to 9L, DT, DTA, VT, T International's 5.9L to 9L Cummins, all CAT engines up to 9L										
M-581CT	2	4"	4"	12	6	2.5"	2.5"	11"	36"	44"
Style/Type Description - OFFSET TO OFFSET Application/Description - All engines up to 9L, DT, DTA, VT, T International's 5.9L to 9L Cummins, all CAT engines up to 9L										
M-1465CT	1	5"	5"	0	0	0	0	10"	44.5"	51"
Style/Type Description - OFFSET TO OFFSET Application/Description - All engines up to 9L, DT, DTA, VT, T International's 5.9L to 9L Cummins, all CAT engines up to 9L; PLUS CATC13 and C15 ACCERT dual exhaust.										